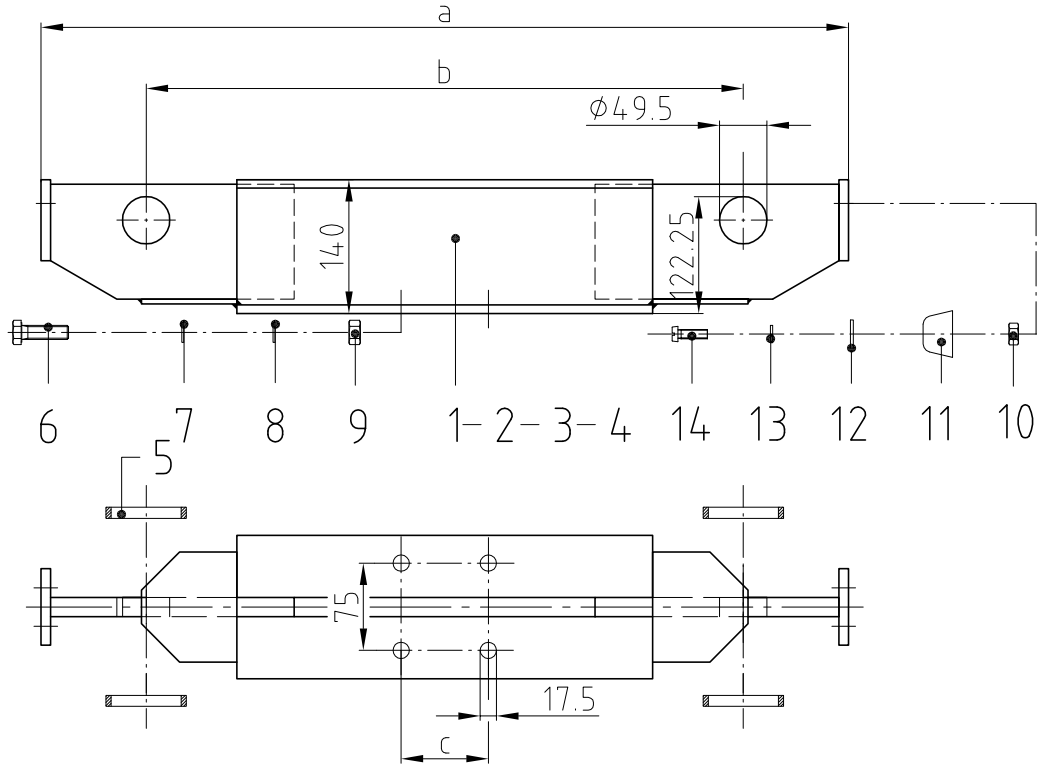


Type	a	b	max. span width	c	
ERK 150/ 800	1000	800	5000	- dependent on size of cross beam - Recommendation to DIN 997	- Lifting capacity max. 2000kg - Drilling for cross beam on site - Colour: grey primed
ERK 150/ 1200	1400	1200	7500		
ERK 150/ 1600	1800	1600	10000		
ERK 150/ 2000	2200	2000	12500		



Stückzahl Quantity			
VI	III	II	I
ERK 50/ 2000	ERK 50/ 1600	ERK 50/ 1200	ERK 50/ 800

8	8	8	8	Slotted cheese head screw M8x25	St 4,8, vz	13	0030.3505
8	8	8	8	Spring washer M8	FSt, vz	12	9031.3904
8	8	8	8	Washer 8.4/17x1.6	St, vz	11	0031.0578
8	8	8	8	Buffer $\phi 40 \times 25$	SBR	10	9038.4500
8	8	8	8	Hexagon nut M8, 0.8d	St 8, vz	9	0031.0008
8	8	8	8	Hexagon nut M16, 0.8d	St 8, vz	8	0031.0042
8	8	8	8	Washer 17/30x3	St, vz	7	9031.3219
8	8	8	8	Spring washer M16	FSt, vz	6	9031.3804
8	8	8	8	Hexagon screw M16x50	St 8,8, vz	6	9030.5304
4	4	4	4	Pipe R55/3.5x7.5	E235	5	9249.1501.4
2				Basic side frame l=2000	S235JR	4	9248.1504.3
	2			Basic side frame l=1600	S235JR	3	9248.1503.3
		2		Basic side frame l=1200	S235JR	2	9248.1502.3
			2	Basic side frame l=800	S235JR	1	9248.1501.3

Bezeichnung / Dimension			Werkstoff	Pos.	Artikel-Nr.
Norm freigeben			Klasse:	Ersetzt durch	Ersatz für
REV.	DATUM	USER	Basic side frame set		
-					
Gezeichnet		J.SUPPIGER	Technical datasheet		
			Massstab 1:5		1 /



swiss lifting solutions

9248.9221.1

Revision

-