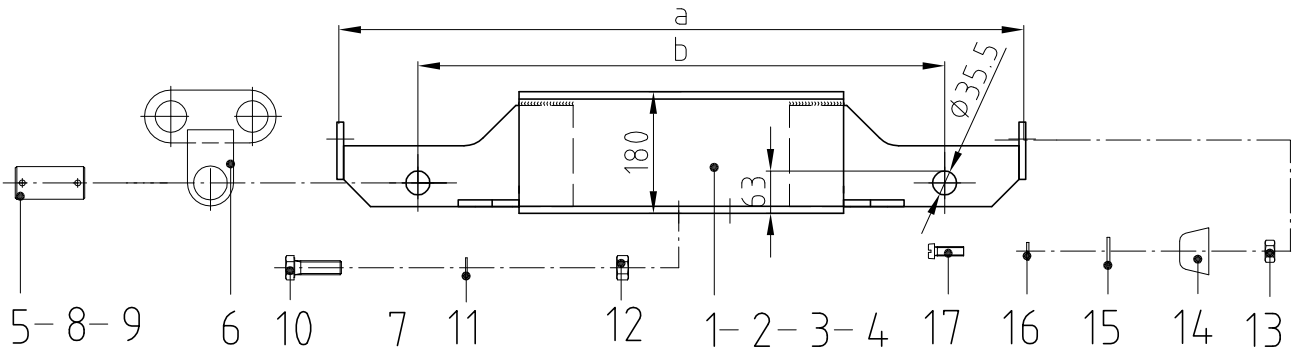
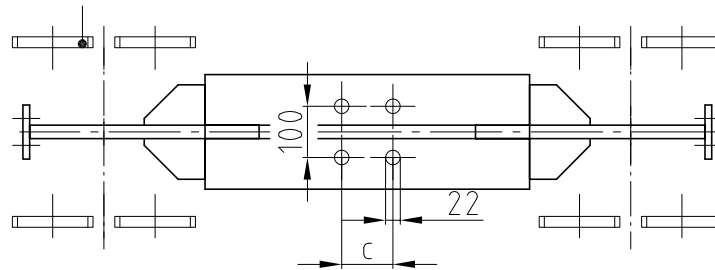


Type	a	b	max. span width	c	
ERK 300/500/ 800	1040	800	5000	- Dependent on size of cross beam	- Lifting capacity max. 5000kg - Drilling for cross beam on site - Colour: grey primed
ERK 300/500/ 1200	1440	1200	7500		
ERK 500/ 1600	1840	1600	10000	- Recommendation to DIN 997	
ERK 500/ 2000	2240	2000	12500		



Stückzahl Quantity			
VI	III	II	I
ERK 500/ 2000	ERK 500/ 1600	ERK 300/ 500/ 1200	ERK 300/ 500/ 800



8	8	8	8	Slotted cheese head screw M8x25	St 4.8, vz	17	0030.3505
8	8	8	8	Spring washer M8	FSt, vz	16	9031.3904
8	8	8	8	Washer 8.4/17x1.6	St, vz	15	0031.0578
8	8	8	8	Buffer Ø40x25	SBR	14	9038.4500
8	8	8	8	Hexagon nut M8, 0.8d	St 8, vz	13	0031.0008
8	8	8	8	Hexagon nut M20, 0.8d	St 8, vz	12	0031.0043
8	8	8	8	Washer HV M20	FSt, vz	11	9031.3930
8	8	8	8	Hexagon screw M20x50	St 8.8, vz	10	9030.5305
8	8	8	8	Washer 60/36x5	St vz	9	9031.3009
8	8	8	8	Splint pin Ø8x71	St vz	8	0031.5080
8	8	8	8	Pipe R55/3.5x7.5	E235	7	9249.1501.4
4	4	4	4	Pivot unit	S235JR	6	9249.1500.3
4	4	4	4	Bolt	C35E	5	9249.1502.4
2				Basic side frame l=2000	S235JR	4	9249.1503.4
	2			Basic side frame l=1600	S235JR	3	9249.1504.3
		2		Basic side frame l=1200	S235JR	2	9244.3008.3
			2	Basic side frame l=800	S235JR	1	9244.3007.3

Bezeichnung / Dimension			Werkstoff	Pos.	Artikel-Nr.
Norm freigeben			Klasse:	Ersetzt durch	Ersatz für
REV.	DATUM	USER	Basic side frame set		
-			ERK500 Technical datasheet		
Gezeichnet	J.SUPPIGER		Massstab 1:5		1 /

	swiss lifting solutions	9248.9237.1	Revision -
--	-------------------------	-------------	---------------