



swiss lifting solutions

ERSATZTEILE | STROMLAUFPLÄNE GPR 500

Spare parts | Pièces de rechange | Onderdelen | Reservedele | Varaosat |
Pezzi di ricambio | Reservedelen | Peças | Reservdelar | Piezas de recambio

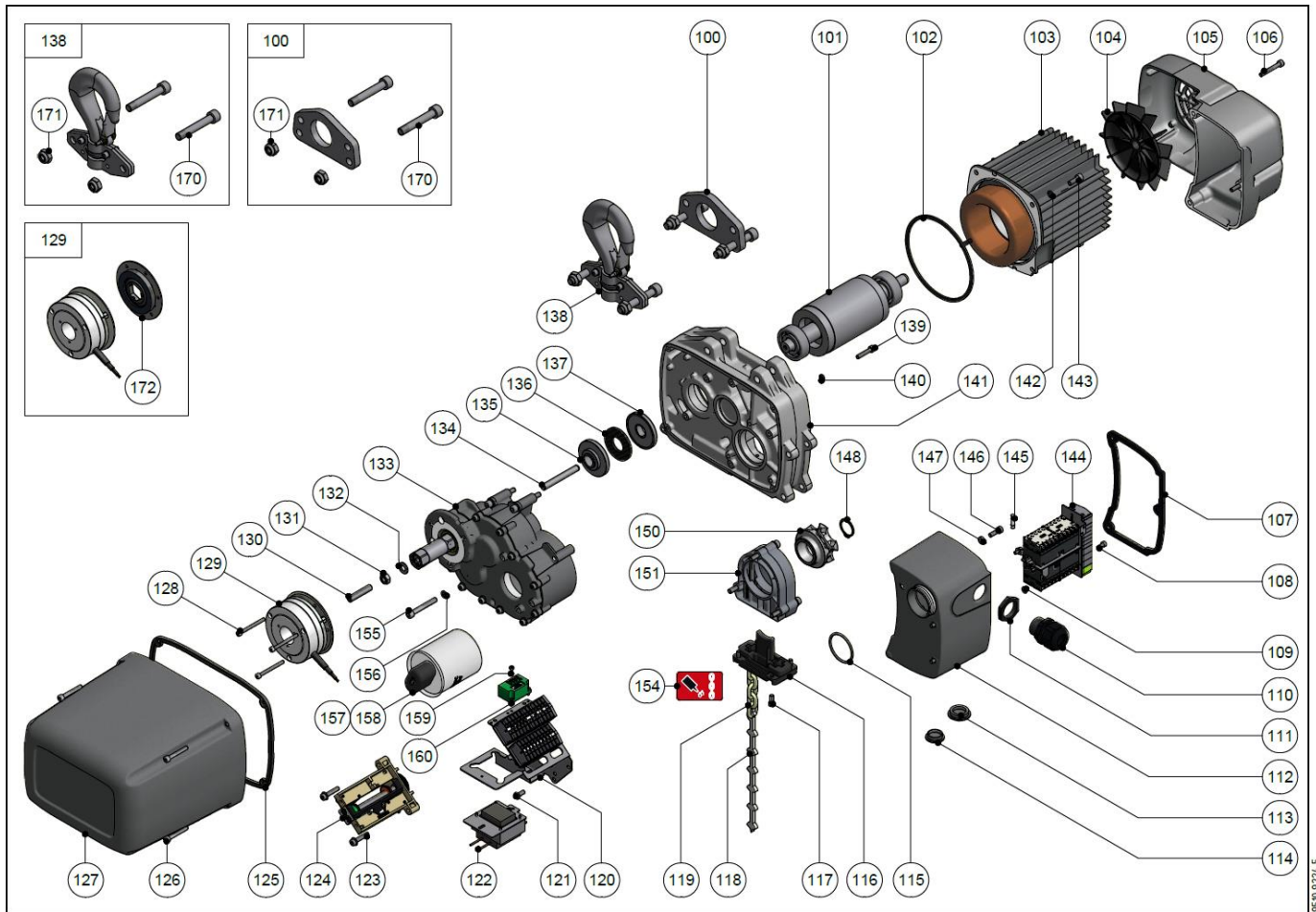
Circuit diagrams | Schéma de connexions | Stroomschema | Kredslobsdiagrammer |
Kytentäkaavio | Aansluitschema | Schema elettrico | Koplingskjema |
Esquema electrico | Elschema | Esquema eléctrico



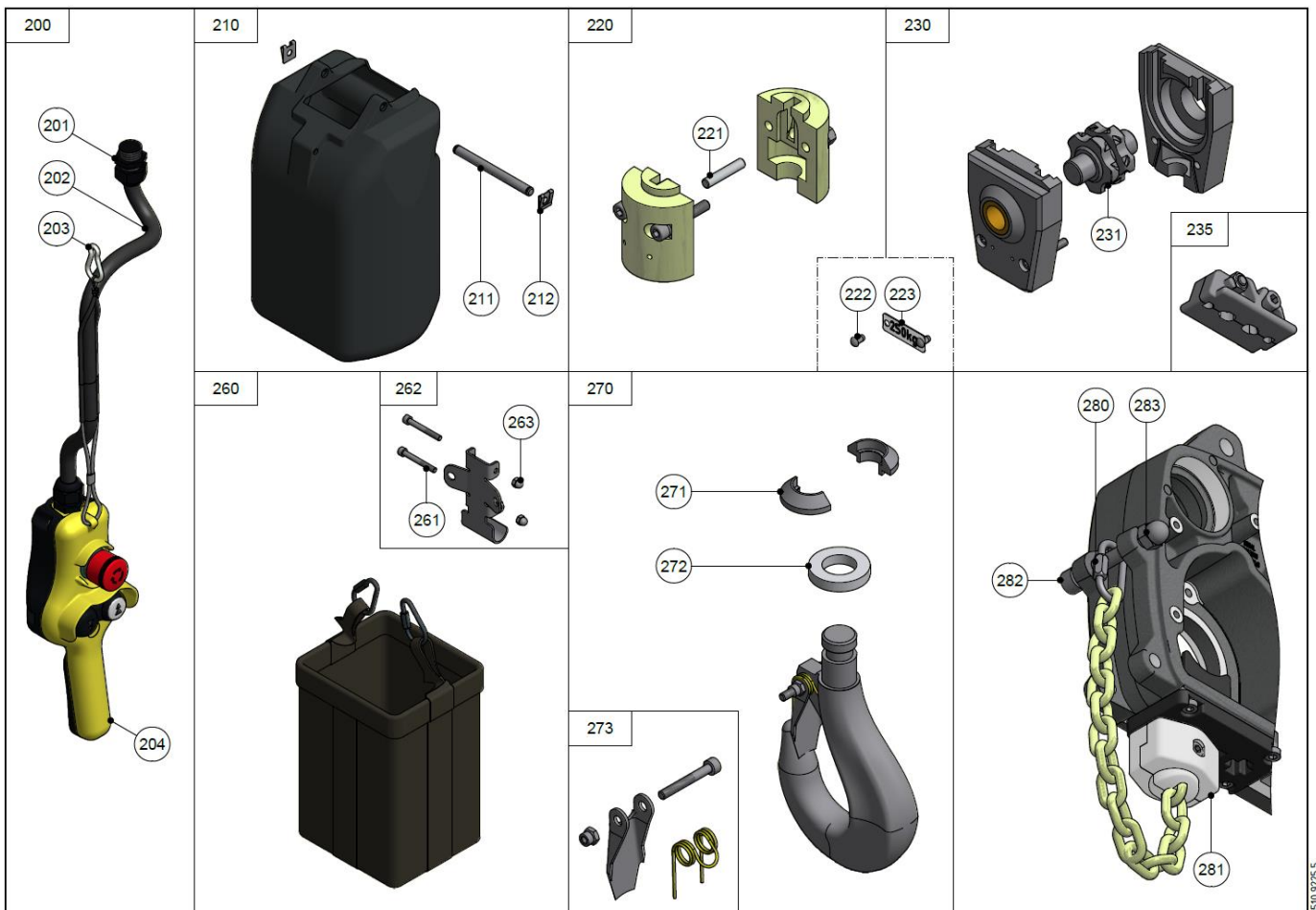
since
1957

www.gis-ag.ch





9510.9224.5



9510.9225.5

		GPR 500
100*	115x62	9401.4502.4
101	2t L=90 -NF/-N	9510.3027.3
102	Ø125/Ø117x2.5	9510.3054.4
103	2/8p 3x400V 50Hz	9512.0350.3
	2/8p 3x230V 50Hz	9512.0351.3
	2/8p 3x460V 60Hz	9512.0350.3
	2p 3x230V/400V 50Hz; 3x460V 60Hz	9512.0250.3
	4p 1x115/230V 50Hz	9512.0158.3
104	Ø134/Ø13.5x35	9510.3062.3
105	165x88x232	9510.3011.1
106	M5x35/22 N	9030.0512
107*	110x166x5	9510.3033.3
108	M4x8	9030.0325
109	Ø4.3/Ø8x0.8	9031.3706
110	M25x1.5	9055.3103
111	M25	9055.4013
112	110x166x177	9510.3006.2
113	M25x1.5	9055.3513
	Ø29.5/23.2x1	9040.2511
114	M20x1.5	9055.3512
	Ø23.5/18.2x1	9040.2510
115	Ø3.87x2.65 NBR 70	9035.0033
116*	80x53x45	9511.3008.3
117	M5x12	0030.0282
118*	200x15.5x5	9041.6021
119*	5x15.3	9039.0006
120	1t , 2t max.480V	9512.1200.3
	1Ph	9512.1203.3
121	M5x10	9030.0027
122	400/42V 50/60Hz	9056.4601.4
	230/460//42V 50/60Hz	9056.4641.4
	115/230//42V 50/60Hz	9056.4644.4
123	M5x25	9030.0022
124	103x84x41	9500.3069.3
125*	230x162x5	9510.3034.3
126	M5x35/22 N	9030.0512
127	228x160x208	9511.4509.3
128	M4x45	0030.9287
129	6Nm 100-125VAC 50/60Hz	9050.4055
	6Nm 200-240VAC 50/60Hz	9050.4056
	6Nm 360-420VAC 50/60Hz	9050.4057
	6Nm 440-480VAC 50/60Hz	9050.4058

		GPR 500
130	M8x40	9030.2018
131	M8	0031.0008
132	Ø8.4/Ø16x1.6	0031.0578
133	195x148x201 N	9511.4506.2
	195x148x201 S	9511.4505.2
134	Ø8x65	9031.5862
135*	Ø45x13.2	9510.3059.4
136*	Ø40/Ø26.5x4	9510.3057.4
137*	Ø45x10.5	9510.3058.4
138*	147.25x115x35.5	9401.4503.3
139	M5x25	9030.0536
140	M5	9031.4002
141	187x55x250	9511.3000.1
142	M6	9031.4003
143	M6x16	9030.0514
144	2t + NA 42V	9512.1100.2
	1t + NA 42V	9512.1000.2
	1t + NA 1x115/42V	9512.1053.2
	1t + NA 1x230/42V	9512.1052.2
145	0.4A UL	9052.0013
146	M5x16	9030.0262
147	Ø9.8/Ø5.1x3	9031.3705
148	DIN 471 22x1.2 A2	9031.2101
150*	Ø55x35.5	9511.4500.2
151*	66x31x88	9511.3061.4
154	0.25l Food	9041.0008
	0.25l	9041.0007
155	M6 x 45/24	9030.0280
156	M6	9031.3903
157	4.5 x 360	0055.0818
158	110 µF, 1Ph 230V 50Hz	9059.0024
	200 µF, 1Ph 115V 50Hz	9059.0025
	275 µF, 1Ph 115V 50Hz	9059.0020
159	M3 x 8	9030.8030
160	PMEA 500	9050.4023
170	M10 spez.	9401.4518.4
171	M10	9031.1254
172*	Ø84x9	9400.3156.4

		GPR 500
200*	2K NA 3m	9290.1086.3
	2K NA 4m	9290.1087.3
	2K NA 5m	9290.1088.3
	2K NA 6m	9290.1089.3
	2K NA 7m	9290.2014.3
	2K NA 8m	9290.1090.3
	2K NA 10m	9290.1091.3
	2K NA 12m	9290.1092.3
	2K NA 15m	9290.1093.3
	2K NA 20m	9290.1094.3
201*	M20x1.5	9055.3102
202*	5x0.75mm²	9055.0110
203	Ø5x50	9031.8004
204*	2K NA	9290.2000.3
210	250x120x155 500/6 KS	9510.3016.1
	370x180x155 500/12 KS	9510.3019.1
211	Ø8x94	9510.3056.4
212	15x17x3.5	9031.2400
220*	48x48x58	9216.4515.3
221*	Ø5.8x30	9216.4519.4
222	Ø3x5	9031.6605
223	250kg	9210.3721.4
	320kg	9210.3722.4
	400kg	9210.3723.4
	500kg	9211.3340.4
	630kg	9211.3341.4

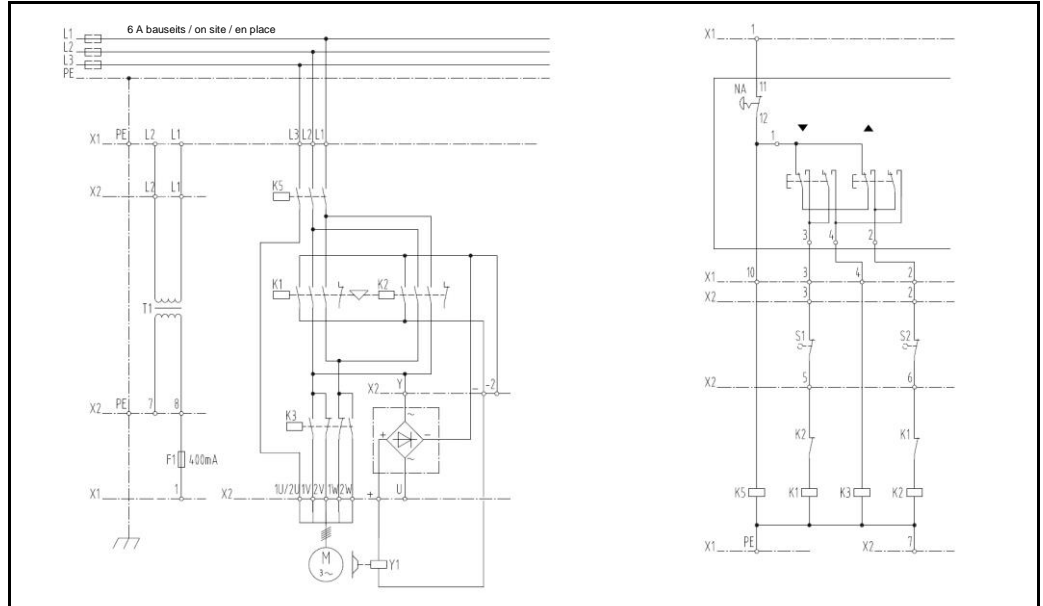
		GPR 500
230	62x88x101	9216.4516.3
231	Ø20x60	9211.4501.4
235	16x26x49	9511.4508.4
260	192x212x320, XS, 250/40, 500/20	9510.3084.3
	192x212x320, S, 250/60, 500/30	9510.3085.3
	192x212x320, M, 250/120, 500/60	9510.3086.3
	192x212x320, L, 500/100	9510.3088.3
	192x212x320, XL, 500/120	9510.3087.3
261	M8x65/28	9030.0313
262	145x83x73	9510.3103.3
263	M8	9031.1052
270*	157x97x27	9216.4514.4
271*	14.5x29x11	9216.4513.4
272*	Ø30xØ17x1	9216.4520.4
273*	54x23	9216.4507.4
280	Ø4x40	9039.0411
281	44x32	9211.4501.4
282	M8x60/28	9030.0530
283	M8	9031.1070

Elektrokettenzüge | Electric chain hoists | Palans électriques à chaîne

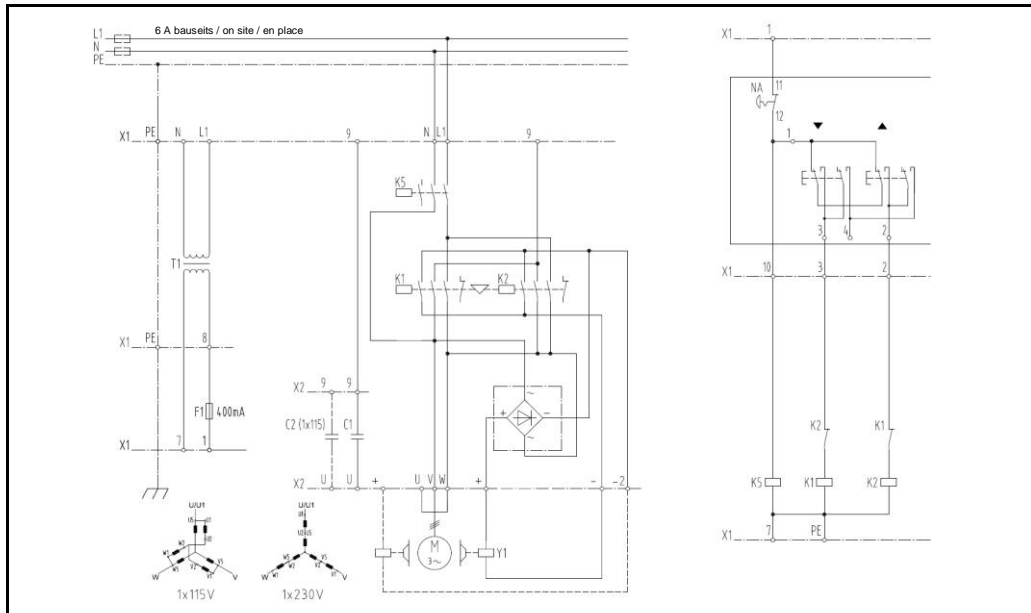
Schützensteuerung Contactor control Commande par contacteurs	2 Geschwindigkeiten mit Not-Aus 2 speeds with emergency stop 2 vitesses avec marche-arrêt	3 Ph	9510.9501.4
	1 Geschwindigkeit mit Not-Aus 1 speed with emergency stop 1 vitesse avec marche-arrêt	3 Ph	9510.9500.4
	1 Geschwindigkeit mit Not-Aus 1 speed with emergency stop 1 vitesse avec marche-arrêt	1 Ph	9500.9508.4

F	Steuersicherung	Control fuse	Fusible de commande
K	Schütz	Contacteur	Contacteur
L	Zuleitung	Power supply	Alimentation électrique
N	Nullleiter	Neutral	Neutre
NA	Not-Aus	Emergency stop	Marche-arrêt
PE	Erdung	Earth	Mise à la terre
S	Schalter	Switch	Interrupteur
T	Transformator	Transformer	Transformateur
U, V, W	Motor	Motor	Moteur
X	Klemmenleiste	Terminal strip	Bornier de raccordement
Y	Bremse	Brake	Frein

9510.9501.4 / 3 Ph



9510.9524.3 / 1 Ph



9510.9500.4 / 3 Ph

